

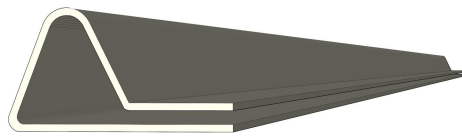


VIVA palm with Zip Channel

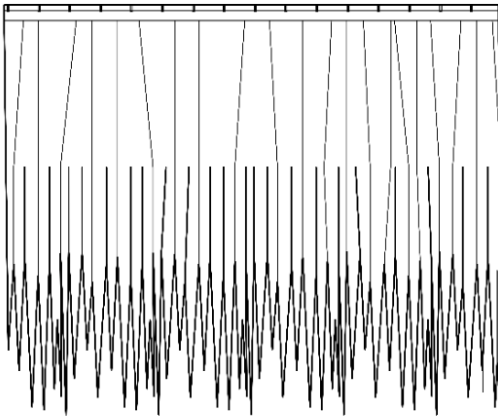
Description

VIVA palm with Zip Channel is an independently waterproof, self spanning synthetic thatched roofing system. The system is comprised of individual HDPE VIVA palm shingles interlocked into a 19 Gauge aluminum channel. VIVA palm with Zip channel eliminates the need for horizontal battens or purlins and installs directly to vertical rafters with spacing up to 32”(813mm).

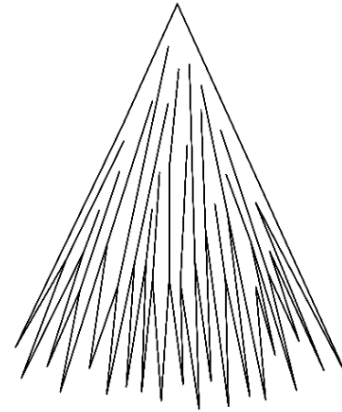
Components



Zip Channel



Field Shingle



Hip Shingle

Part Numbers	Weathered Palm	New Palm
Zip Channel	41000	41000
Folded Field Shingle	810100-WP	710100-NP
Hip/Ridge Shingle	810110-WP	710110-NP



Specifications

Part	Size	Weight	Exposure	Coverage	Material
Zip Channel	10'x 0.71" (3048mm x 18mm)	Avg. 1.4lb (0.64kg)	Up to 9" (229mm)	10 linear ft (3.05) linear m	Aluminum
Field Shingle	32"x 27.5"x 0.030" (813mm x 699mm x 0.8mm)	Avg. 0.97lb (0.44kg)	Up to 9" (229mm)	1.875 Sq.ft (0.174 m2) (5.72 pcs per m2) (1.3 pcs per linear m)	HDPE
Hip/ Ridge Shingle	22"x 27.5"x 0.030" (559mm x 699mm x 0.8mm)	Avg. 0.37lb (0.18kg)	9" average (229mm)	0 Sq. ft (1 linear foot 2 pieces) 0 m2 (1 linear meter 5 pieces)	HDPE

Packaging and Storage

Part	Box	Bulk Stack
Zip Channel	Bundle <u>Quantity:</u> 30 pcs per bundle <u>Size:</u> 10' x 3" x 3" (3048mm x 76mm x 76mm) <u>Weight:</u> 42 lbs (19kg)	N/A
Field Shingle (All colors, and styles)	Box <u>Quantity:</u> 70pcs <u>Size:</u> 37"x 28"x 11" (940mm x 711mm x 280mm) <u>Weight:</u> Approx. 70 lbs (31.75kg) <u>Coverage:</u> 12.2 m2 Pallet <u>Quantity:</u> 12 boxes (840pcs) <u>Size:</u> 40"x 48"x 89" (1016mm x 1219mm x 2260mm) <u>Weight:</u> Approx. 900 lbs (408.2kg) <u>Coverage:</u> 146.8 m2	Pallet Full pallets only <u>Quantity:</u> 1,400 pcs <u>Size:</u> 40" x 48" "x 69" (1016mm x 1219mm x 2260mm) <u>Weight:</u> Approx. 1,500 lbs (680.4kg) <u>Coverage:</u> 244.7 m2
Hip/ Ridge Shingle (All colors, and styles)	Box <u>Quantity:</u> 100pcs <u>Size:</u> 37"x 28"x 11" (940mm x 711mm x 280mm) <u>Weight:</u> Approx. 45 lbs (20.41kg) <u>Coverage:</u> 0 m2 Pallet <u>Quantity:</u> 12 boxes (1,200pcs) <u>Size:</u> 40"x 48"x 89" (1016mm x 1219mm x 2260mm) <u>Weight:</u> Approx. 600 lbs (272.1kg) <u>Coverage:</u> 0 m2	Pallet Full pallets only <u>Quantity:</u> 1000 pcs <u>Size:</u> 40" x 48" "x 89" (1016mm x 1219mm x 2260mm) <u>Weight:</u> Approx. 400 lbs (181.4kg) <u>Coverage:</u> 0 m2



Storage: Store VIVA palm for Zip Channel installation in a dry, well-ventilated, weather tight, location. Do not expose boxes to excessive moisture. Overstacking boxes or excessive moisture may cause boxes to collapse. Do not remove wrapping from bulk stack pallet until final placement at installation location.

Application

